

DOMA[®]
ONE STEP BEYOND



**Plastic and concrete spacers
Plastic and metal profiles**

Company Profile

DOMA was established in 1996 as a natural continuation of the activity of the engineering and commercial agency established in 1987 by Eng. Victor Steinberg, with the aim of providing the Israeli construction industry with engineering solutions and the use of sub-systems to industrialize construction.

DOMA is a family company managed by Michael and Dror Steinberg.

The company is engaged in the production, import and distribution of engineering products to improve, streamline and economize construction processes, while providing service and technical support for its products.

DOMA is a pioneer in the application of advanced methods and the use of engineering products that are common overseas, such as Rebind Connections, male and female Coupler Systems, provides reliable and efficient solutions for all connections of reinforcement bars, inserts and lifting anchors for prefabricated concrete elements, expansion joint covers, mechanical accessories for dry fixed stones for cladding of walls, etc.

DOMA is ISO 9001:2015 certified in the fields of: import, production and marketing, development and planning of engineering products for the construction industry.

DOMA manufactures by outsourcing a large number of products and private brands, using advanced technologies based on licenses from various manufacturers worldwide.

DOMA has a technical department designed to assist the planner and contractor in providing advanced solutions for execution, while using the company's products correctly and streamlining the construction process by using the company's products.

DOMA frequently holds seminars for engineers, supervisors, contractors and company teams.

Apart from the products manufactured by DOMA, DOMA represents world-renowned companies specializing in the production of engineering products: that comply with the strictest European and American quality standards, including the following companies:

HALFEN-LEVIAT (Germany)	The world's oldest and leading company in the production of anchoring channels, connection systems using screws for prefabricated concrete elements and curtain walls. Lifting anchors for FRIMEDA and DEHA.
ANCON-LEVIAT (GB)	A company specializing in Rebar reinforcement connection systems, holding a world patent for quick connection of steel rebars.
HAZ METAL (Turkey)	A company specializing in the production of stone anchoring accessories for dry fixed cladding and cast in channels systems using channels and T-head bolts.
BUZON (Belgium)	The company invented the method of external support pedestals for floating stone floors, as well as steel and fiberglass grids
NEO (Turkey)	A company specializing in the production of plastic spacers
GURBETCILER (Turkey)	A company specializing in the production of plastic spacers
C/S GROUP (USA)	The world's leading company in the field of expansion joint covers for earthquake joints.

Below is a partial list of the products that the Doma offers to its customers:

- » Continuing box CBOX For casting interruption and continuity
- » Male and female mechanical connectors for extending rebars BMS / DBAR / UPSET / MBT
- » Inserts for fixing, connecting, lifting and transporting prefabricated elements
- » Lifting and transporting anchors for prefabricated elements
- » Plastic and concrete spacers, spacers between steel meshes DomaNet
- » DYWIDAG bars, wing-nuts and other complementary accessories for industrial formworks
- » Hooks (pins) made of stainless steel 316 only for fixing stone slabs using the "Barnowitz" method and wet cladding
- » Accessories for anchoring stone slabs using the dry cladding method

Engineer Michael Steinberg,
joint CEO

Mr. Dror Steinberg,
joint CEO

Plastic and concrete spacers



Plastic spacers for piles and slurry walls

Pile wheel for slurry wall DomaPile - DPC

- Usage:** Spacer for an rebars cage on a pile and a slurry wall
- Description:** Plastic wheel with stiffening ribs.
- Assembly method:** The Spacer is mounted directly to the bars of the cage or using an additional stirrup. It is recommended to use at least three spacers per stirrup. Recommended distance between spacers: 2.5 m
- Advantages:** Allows easy insertion of an iron cage into the excavation. Creates a constant concrete thickness as planned.



DPC

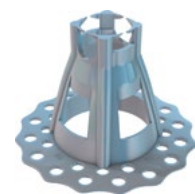
Item no	DOMA Item	Desc.	Concrete cover (mm)	Bar dia. (mm)	Sack packing (Units)
1000	DPC 110	Open wheel	50	max10	200
1001	DPC 140	Open wheel	65	max10	150
1002	DPC 150	Open wheel	70	max12	100
1003	DPC 170	Open wheel	80	max12	75
1004	DPC 190	Open wheel	90	max12	50
1005	DPC 220	Open wheel	105	max12	40



Spacers for cast floors on a soft substrates

Wide base spacer DomaSoft - DS

- Usage:** Designed to support rebars on a soft substrate such as; sealing layers, nylon before casting floors on the ground, Styrofoam boards, gypsum boards, etc.
- Description:** Spacer, with a wide base with rebar connector for coverage, available in two sizes. Insert the rebars into the groove according to the thickness of the planned concrete cover.
- Assembly method:** It is possible to assemble rebars in a second row perpendicular to the first row.
- Advantages:** Very stable even on a soft substrate. Does not damage or penetrate the substrate because of its wide base. The same spacer can be used for two dimensions of concrete cover. Two intersecting rebars can be supported on the same spacer.



DS

Item no	DOMA Item	Concrete cover (mm)	Bar dia. (mm)	Sack packing (Units)
2000	DS 15\20	15 or 20	16-8	500
2001	DS 25\30	30 or 25	16-8	400
2002	DS 40\50	50 or 40	16-8	200
2003	DS 50\60	60 or 50	16-8	Upon Req.

Spacers for walls and columns

Round spacer DomaWall - U

- Usage:** Distancing rebars and meshes in walls, columns, mini piles and facade cladding.
Description: Round plastic spacer with center hole and clip to hold rebars with different sizes
Assembly method: Insertion by turning until the rebars enters the center of the spacer.
 It is recommended to ensure that the opening is always on the opposite side of the contact with the formworks.
 It is recommended to use at least 4 units per sqm.
Advantages: Few contact points with the form.
 Disconnection of the spacer is prevented by a safety tab in the center of the wheel.



DW-U \ DW1-U

Item no	DOMA Item	Concrete cover (mm)	Bar dia. (mm)	Sack packing (Units)
3001	DW-U 20	20	20-6	250
3002	DW-U 25	25	20-6	250
3003	DW-U 30	30	20-6	125
3004	DW-U 40	40	20-6	125
3005	DW-U 50	50	20-6	50
Item no	DOMA Item	Concrete cover (mm)	Bar dia. (mm)	Sack packing (Units)
3010	DW1-U 15	15	10-4	1,000
3011	DW1-U 20	20	12-4	1,000
3012	DW1-U 25	25	12-4	500
3013	DW1-U 30	30	12-4	500
3014	DW1-U 40	40	12-4	125
3015	DW1-U 50	50	12-4	100

"KIPOD" spacer DomaWall - K

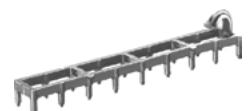
Item no	DOMA Item	Concrete cover (mm)	Bar dia. (mm)	Sack packing (Units)
3016	DWK-U 20	20	12-6	2,500
3017	DWK-U 25	25	14-6	2,000
3018	DWK-U 30	30	16-8	1,000
3019	DWK-U 40	40	16-8	500
3020	DWK-U 50	50	16-8	350



DWK-U

"SULAM" spacer DomaWall - P

- Usage:** Stable distancing of rebars and iron meshes from the formworks.
Description: Spacer, ladder-shaped 30x210 mm.
Assembly method: Hang the spacer on the horizontal rebars by using a hook.
 It is recommended to use a minimum of 2 units per sqm.
Advantages: Keeps a stable distance, supporting two horizontal rebars together.
 Does not tend to fall or turn during the casting of the concrete.
 Minimal contact points with the formworks.
 Being easy and quick to assemble, it saves labor costs.



DW-P

Item no	DOMA Item	Concrete cover (mm)	Bar dia. (mm)	Sack packing (Units)
3102	DW-P 25	25	max14	250
3103	DW-P 30	30	max14	250

Spacers for concrete surfaces

"Multi-diameter" spacer for light loads DomaSlab - C

- Usage:** Supporting rebars for all types of concrete elements.
Description: Single bar support clip.
Assembly method: Mounting the clip on a bar up to the base of the opening.
Advantages: Stable base and full adhesion of the iron even in small diameters. Universal accessory suitable for a range of diameters, between 4 mm and 16/18 mm
Note: Other dimensions upon request



DS-C

Item no	DOMA Item	Concrete cover (mm)	Bar dia. (mm)	Sack packing (Units)
4000	DS-C 15	15	12-4	Upon Req.
4001	DS-C 20	20	16-4	2,500
4002	DS-C 25	25	18-4	1,000
4003	DS-C 30	30	18-4	1,000
4004	DS-C 40	40	18-4	1,000
4005	DS-C 50	50	18-4	Upon Req.

"Multi-diameter" spacer for light loads DomaSlab - H

Item no	DOMA Item	Concrete cover (mm)	Bar dia. (mm)	Sack packing (Units)
4011	DS-H 20	20	16-4	4,000
4012	DS-H 25	25	16-4	3,500
4013	DS-H 30	30	16-4	2,500
4014	DS-H 40	40	16-4	1,250
4015	DS-H 50	50	16-4	Upon Req.



DS-H

"Multi-diameter" spacer for heavy loads DomaSlab - N

- Usage:** Supporting rebars for all types of concrete elements up to a load of 100 kg per unit.
Description: Suitable for supporting iron cages with heavy beams, etc.
Assembly method: Mounting the clip on a bar up to the base of the opening.
Advantages: A particularly stable base in the form of a + (plus). Universal accessory suitable for a range of diameters, between 8 mm and 25 mm



DS-N

Item no	DOMA Item	Concrete cover (mm)	Bar dia. (mm)	Sack packing (Units)
4200	DS-N 20	20	25-8	Upon Req.
4201	DS-N 25	25	25-8	Upon Req.
4202	DS-N 30	30	25-8	Upon Req.
4203	DS-N 40	40	25-8	Upon Req.
4204	DS-N 50	50	25-8	Upon Req.

Plastic and concrete spacers

Spacer bar for walls and ceilings Doma - Wall / Slab - DS

- Usage:** Stable distancing of rebars and iron meshes in walls from the formworks and mesh supports and/or lower rebars in the ceiling of all types of formworks
- Description:** Spacer, linear-shaped, unit length 100 cm
- Assembly method:** In walls - hang the spacer on the horizontal rebar by using a hook. It is recommended to use at least 1 unit per meter
On the floor - place the spacer on the formwork, at a distance of 60-80 cm and place the lower rebars on top of the flat side of the spacer
- Advantages:** A stable spacer that supports the beams. Large mold area. Does not tend to fall or turn during the casting of the concrete, has minimal contact points with the mold (rounded legs,) the deployment time of the spacers is short and saves labor costs, quick to use, strong and suitable for high loads, covers large rebars surfaces, does not leave grooves in the ceiling



D-DS

Item no	DOMA Item	Concrete cover (mm)	Qty / package (Units)	Qty / pallet (Units)
4801	DS-NS 25	25	50/100	2000
4802	DS-NS 30	30	50/100	2000
4803	DS-NS 40	40	50	2000

"ZIGZAG" plastic spacer for walls and floors DomaZigag - Z

- Usage:** Mesh support and/or lower rebars in the ceiling on top of all types of formworks and on walls using the "Barnowitz" method.
- Description:** Spacer, in 1 m units, with an extension option by connecting an additional unit at the ends.
- Assembly method:** Place the spacer on top of the formwork at a distance of 60 to 80 cm, or on top of the stone placed on the mold of the wall, using the "Barnowitz" method.
- Advantages:** There is no need to tie the rebar to the support zigzag.
The support zigzag is filled with concrete without the need of special vibration. Zigzag supports have a short deployment time thus saving labor costs.
- Note:** Color black (standard) Additional Colors: gray and white (by special order.)



DS-Z

Item no	DOMA Item	Concrete cover (mm)	Qty / package (Units)	Qty / pallet (Units)
4601	DS-Z 25	25	50	2,000
4604	DS-Z 50	50	20	1,400

"SNAKE" plastic spacer for soft/hard substrates and walls DomaSnake - S

- Usage:** Mesh support and/or lower rebars in the ceiling on top of all types of formworks and on soft substrate and walls using the "Barnowitz" method.
- Description:** Spacer, "snake"-shaped in length of 80 cm.
- Assembly method:** Place the spacer snakes on top of the formwork, at a distance of 60 to 80 cm and place the lower iron on top of the flat side. Place the "snake" spacer on top of a soft substrate, with the teeth facing upwards and place the rebars on top of it.
There is no need to tie the rebars to the "snake" spacer.
- Advantages:** The support "snake" is filled with concrete without the need for special vibration. "Snake" spacers have a short deployment time thus saving labor costs. Quick to use, strong and suitable for large loads, covers large iron surfaces, does not leave grooves in the ceiling other dimensions upon request
- Note:** Reg. model 45113



DS-N

Item no	DOMA Item	Concrete cover (mm)	Pallet packing (Units)
4500	DS-S 20	20	Upon Req.
4501	DS-S 25	25	2,800
4502	DS-S 30	30	2,240
4503	DS-S 40	40	1,680

Spacers for concrete surfaces

Plastic spacer profile - DomaSlab - U

- Usage:** Mesh support and/or lower rebars in the ceiling on top of all types of formworks and on walls using the "Barnowitz" method.
- Description:** Perforated profile supplied in 2-3 m long. U-shaped.
- Assembly method:** Place the U-profile at a distance of 60 to 80 cm from each other and place the lower rebars on top of them.
Place the bar on a soft substrate with the open side up.
- Advantages:** There is no need to tie the rebars to the support U-profile.
The U-profile are filled with concrete that penetrates them through the openings on three sides. The deployment time of the rebars on the U-profiles is short and saves labor costs.
- Note:** Before using U-profile as spacers in prefabricated elements, it is advisable to check compliance with the specification requirement and make a sample for the customer's approval.



DS-U

Item no	DOMA Item	Concrete cover (mm)	Bundle packing (m)	Pallet packing (Units)
4300	DS-U 15	15	100	Upon Req.
4301	DS-U 20	20	100	Upon Req.
4302*	DS-U 25/2	25	100	4,900
4303**	DS-U 25/3	25	150	6,300
4304	DS-U 30	30	100	Upon Req.
4305	DS-U 40	40	60	Upon Req.
4306	DS-U 50	50	60	Upon Req.

Floor support ring DomaRing - R

- Usage:** Lower iron mesh support in the ceiling on top of all types of formworks.
- Description:** Set of round rings with small feet, supplied in three diameters 23 cm, 26.5 cm and 30 cm.
- Assembly method:** Place the ring on top of the ceiling mold with a distance of 80 cm between them and place the lower mesh on top of them.
- Advantages:** There is no need to tie the iron to the support ring. The spacer ring has very small contact points with the mold (pinpoint). The spacer ring is open, and the concrete covers it easily without the need for vibration. Ring spacers have a short deployment time thus saving labor costs. Does not cause cracks in the ceiling plaster.
- Note:** Other dimensions upon request



DS-R

Item no	DOMA Item	Concrete cover (mm)	Sack packing (Units)
4400	DS-R 25	25	50
4401	DS-R 30	30	50

Concrete spacers and concrete plugs

Close Concrete wheel for piles DomaConcrete Wheel - DCWC

- Usage:** Spacer intended for a rebar cage on a pile and a slurry wall
- Description:** A wheel made of concrete in which a 16 mm diameter hole for a rebar stirrup.
- Assembly method:** The wheel is mounted by using an additional stirrup to the rebar cage. It is recommended to use at least three wheels per stirrup. Recommended distance between stirrups: 2.5 m
- Advantages:** Allows the rebar cage to be easily inserted into the excavation without the spacer falling off.
Creates a constant concrete thickness as planned. Closed wheel, 40 mm thick, for full support, does not fall apart during the lowering of the cage into the hole. Adheres well to the surrounding cast concrete, resistant to corrosive environments.



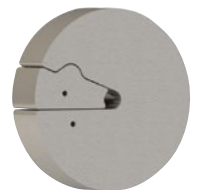
DCWC

Item no	DOMA Item	Concrete cover (mm)	Box packing (Units)	Pallet packing (Units)
5000	DCWC 110\40\16	50	28	980
5001	DCWC 150\40\16	70	16	800
5002	DCWC 210\40\16	100	8	256

Spacers for concrete surfaces

Open Concrete wheel for piles DomaConcrete Wheel - DCWO

- Usage:** Spacer intended for a rebar cage on a pile and a slurry wall.
- Description:** A wheel made of concrete in which a 16 mm diameter hole for a rebar stirrup.
- Assembly method:** The assembly of the concrete wheel, on top **of iron of the spiral**. Inserting a wedge into the concrete wheel and tying it with a wire to prevent the wedge from falling while inserting the pile into the ground.
It is recommended to use at least three wheels per stirrup.
- Advantages:** Recommended distance between stirrups: 2.5 m
Allows the rebar cage to be easily inserted into the excavation without the spacer falling off. Creates a constant concrete thickness as planned. Wheel, 40 mm thick, for full support that does not fall apart while lowering the cage into the hole.
Adheres well to the surrounding cast concrete, resistant to corrosive environments.



DCWO

Item no	DOMA Item	Concrete cover (mm)	Box packing (Units)	Pallet packing (Units)
5005	DCWO 110\40\16	50	28	980
5006	DCWO 150\40\16	70	16	800
5007	DCWO 200\40\16	90	8	256

Concrete spacers and concrete plugs

Concrete spacer with fibers (type bone) DF-B - DomaFibre

- Usage:** Spacer designed for visible concrete finish.
- Description:** Bone-shaped body made of concrete with fibers, and a hole for the passage of a binding wire.
- Assembly method:** The spacer must be tied with a wire to the rebars. Suitable mainly for walls and columns.
- Advantages:** Two or three measures of Concrete cover on top of the spacer. Resistant to environmental conditions of corrosion. Adheres well to the surrounding cast concrete.
- Note:** Other dimensions upon request. Can be supplied without tying wire.



DF-B "bone"

Item no	DOMA Item	Concrete cover (mm)	Sack packing (Units)	Pallet packing (Units)
5100	DF-B 20\25\30	30\25\20	500	20,000
5101	DF-B 25\30\35	35\30\25	500	Upon Req.
5102	DF-B 35\40\50	50\40\35	250	10,000
5103	DF-B 45\55\60	60\55\45	125	5,000

Cast concrete spacer (cube) - DF-Q - DomaCube

- Usage:** Spacer designed for high loads and visible concrete finish.
- Description:** Trapezoid-shaped body made of cast concrete, with an inserted binding wire.
- Assembly method:** The spacer must be tied to the rebars, to ensure stability during casting. Suitable mainly for walls and floors.
- Advantages:** Suitable for high loads. Resistant to environmental conditions of corrosion. Adheres well to the surrounding cast concrete.



DF-Q "Cube"

Item no	DOMA Item	Concrete cover (mm)	Sack packing (Units)	Pallet packing (Units)
5200	DF-Q 25	25	250	10,000
5201	DF-Q 30	30	250	10,000
5202	DF-Q 40	40	125	7,500
5203	DF-Q 45	45	125	Upon Req.
5204	DF-Q 50	50	100	5,000
5205	DF-Q 60	60	100	5,000
5206	DF-Q 65	65	63	Upon Req.
5207	DF-Q 75	75	63	Upon Req.

Concrete spacers and concrete plugs

Cast concrete spacer (with clips) Doma CUP-DF-K

- Usage:** Spacer designed for high loads and visible concrete finish.
- Description:** Clip-shaped body with rounded protrusions at the base, a spacer in minimal contact with the mold, with a plastic clip for connecting to the rebars.
- Assembly method:** The spacer must be fixed in front of the iron using the plastic clip, to ensure stability while casting.
- Advantages:** Suitable mainly for floors, ceilings and beams. Suitable for large loads, easy to assemble, minimum contact with the mold.



GBVA

Item no	DOMA Item	Concrete cover (mm)	Suitable for bars (mm)	Sack packing (Units)	Pallet packing (Units)
5602	GBVA 25/4KK	25	4-14	300	18,000
5603	GBVA 30/4KK	30	4-14	250	13,750
5604	GBVA 40/4KK	40	4-14	250	10,000
5605	GBVA 50/4KK	50	4-14	200	8,000

Concerte Spacer profile DomaConcrete - T

- Usage:** Spacer designed for high loads and visible concrete finish.
- Description:** T-shaped body, made of cast concrete, 330 mm long.
- Assembly method:** The spacer must be placed on top of the mold, the rebar can be placed on top of the spacer, there is no need to tie the rebars.
- Advantages:** Suitable for large loads. Resistant to environmental conditions of corrosion. Adheres well to the surrounding cast concrete.



DF-T

Item no	DOMA Item	Concrete cover (mm)	Box packing (Units)	Pallet packing (Units)
5700	DF-T 30/33	30	50	2,000
5701	DF-T 40/33	40	40	1,800
5702	DF-T 50/33	50	40	1,440

Concrete conical plugs DomaConcreteCone - DCC 2

- Usage:** Concrete cone for filling holes in concrete walls resulting from the use of plastic cones.
- Description:** Concrete plug with the same dimensions as the plastic cones.
- Assembly method:** The plug must be inserted into the gap created by the plastic cone and glue the plug using the special adhesive (DCG Part A/B) according to the specifications attached to the adhesive.
- Advantages:** Creates a smooth and aesthetic concrete area after filling the holes, at a lower cost than other methods.
- Note:** The adhesives are suitable for use with drinking water. Resistant to environmental conditions of corrosion.



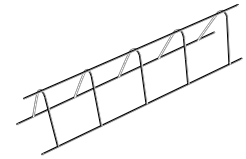
DCC2

Item no	DOMA Item	Concrete cover (mm)	Sack packing (Units)	Pallet packing (Units)
5401	DCC 26\50	DSK 22\50 DSK 26\50	250	6,250

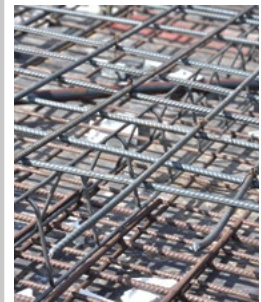
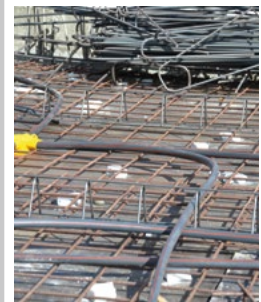
Steel spacers for walls and floors

DomaNet mesh spacer - DomaNet

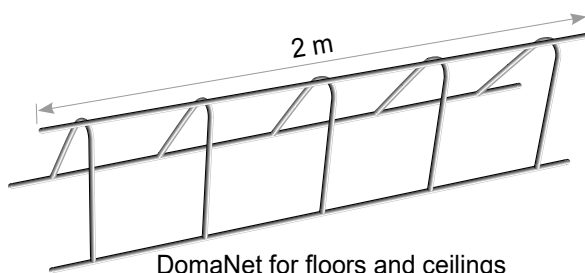
- Usage:** Maintaining the distance between two layers of ceiling or wall reinforcements.
- Description:** Spacer, triangular, made of three longitudinal rods and transverse rods. Supplied in heights from 60 mm to 300 mm. Unit length 2 meters.
- Assembly method:** Concrete ceilings and floors - Place the DomaNet so that the base of the open triangle is on top of the bottom reinforcement layer, at 60-100 cm from each other, and the upper reinforcement layer must be placed on top of the DomaNet. The base of the DomaNet must be tied to the bottom layer of the reinforcement, two ties in the front and two ties in the back. The top of the DomaNet must be tied to the top layer of the reinforcement, at least two ties.
- Advantages:** In walls the DomaNet must be tied to the vertical iron on both sides. Manufactured with an advanced welding technology. Easy to transport and assemble on site. Maintains the distance precisely between two layers of reinforcement, a product with a stable and strong structure. Without protruding iron elements from the spacer (the corners of the DomaNet.) Spacers have a short deployment time thus saving labor costs, are quick to use and cover large surfaces.
- Note:** The product is supplied in standard heights (refer to table.) Any size (not listed in the table) can be ordered, from 60 mm to 300 mm, with prior coordination of the height measure and the quantity to order.



DomaNet
60-300



Item no	DOMA Item	Desc.	Suitable for ceilings / walls width (mm)	Qty / package (mm)	Qty / pallet (Units)
5901	DNT II 060	DomaNet 60	130-150	20	1,000
5902	DNT II 070	DomaNet 70	150-180	20	1,000
5903	DNT II 080	DomaNet 80	170-200	20	1,000
5904	DNT II 090	DomaNet 90	170-210	20	1,000
5905	DNT II 100	DomaNet 100	190-220	20	1,000
5906	DNT II 110	DomaNet 110	200-230	20	1,000
5907	DNT II 120	DomaNet 120	210-230	20	1,000
5908	DNT II 130	DomaNet 130	210-240	20	1,000
5909	DNT II 140	DomaNet 140	220-250	20	500
5910	DNT II 150	DomaNet 150	230-260	20	500
5911	DNT II 160	DomaNet 160	240-270	20	500
5912	DNT II 170	DomaNet 170	250-280	20	500
5913	DNT II 180	DomaNet 180	260-290	20	500
5914	DNT II 190	DomaNet 190	270-300	20	500
5915	DNT II 200	DomaNet 200	270-300	20	500
5916	DNT II 210	DomaNet 210	280-310	20	500
5917	DNT II 220	DomaNet 220	290-320	20	500
5918	DNT II 230	DomaNet 230	290-330	20	500
5919	DNT II 240	DomaNet 240	300-340	20	500
5920	DNT II 250	DomaNet 250	310-350	20	500
5921	DNT II 260	DomaNet 260	320-360	20	500
5922	DNT II 270	DomaNet 270	330-370	20	500
5923	DNT II 280	DomaNet 280	340-380	20	500
5924	DNT II 290	DomaNet 290	360-390	20	500
5925	DNT II 300	DomaNet 300	360-400	20	500



DomaNet for floors and ceilings

Steel spacers for walls and floors

Chair mesh spacer - DomaChair

Usage: Maintaining the distance between two layers of ceiling reinforcements.

Description: A spacer made of rebars, in diameters of 8, 10 and 12 mm, in the form of a three-dimensional chair, supplied upon request.

Assembly method: Concrete ceilings and floors - Place the chair (DomaChair) so that the legs of the chair are placed on top of the lower mesh/rebar at about 60 cm from each other. It is recommended to place 2-4 units per sqm. The top layer of reinforcement should be placed on top of the chair. The base of the chair must be tied to the lower layer of the reinforcement and the upper layer of the reinforcement to the upper part of the chair.

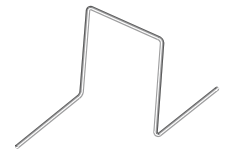
Advantages: Manufactured precisely and can be supplied for high ceiling \ floor dimensions, including high foundation.

Note: A product with a stable and strong structure. The product is supplied according to the table or by prior coordination of the chair dimensions and the quantity to be ordered.

Cost calculation: The price will be calculated according to the theoretical weight of the rebar, rebar 8 mm = 0.41 kg/m

The product: rebar 10 = 0.64 kg/m, rebar 12 = 0.92 kg/m.

Price composition: rebar to be processed: X price per ton (NIS)
 Processing price add-ons, cutting: Y price per ton (NIS)
 Processing price add-ons, bending: Z price per ton (NIS)
 Processing price add-on, stirrups, W unit price (NIS)



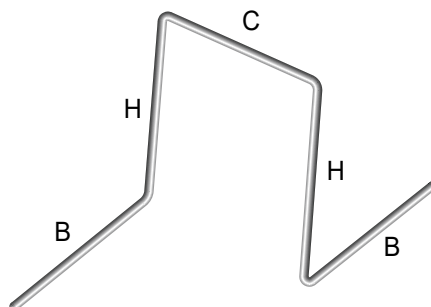
DomaChair

Item no	DOMA Item	Desc.	Suitable for ceilings / walls thickness (mm)	Part length Top (mm) C	Base length (mm) B	Height (mm) H
5935	DCH150	DomaChair 150	230-260	300	300	150
5936	DCH160	DomaChair 160	240-270	300	300	160
5937	DCH170	DomaChair 170	250-280	300	300	170
5938	DCH180	DomaChair 180	260-290	300	300	180
5939	DCH190	DomaChair 190	270-300	300	300	190
5940	DCH200	DomaChair 200	270-300	500	500	200
5941	DCH210	DomaChair 210	280-310	500	500	210
5942	DCH220	DomaChair 220	290-320	500	500	220
5943	DCH230	DomaChair 230	290-330	500	500	230
5944	DCH240	DomaChair 240	300-340	500	500	240
5945	DCH250	DomaChair 250	310-350	500	500	250
5946	DCH260	DomaChair 260	320-360	500	500	260
5947	DCH270	DomaChair 270	330-370	500	500	270
5948	DCH280	DomaChair 280	340-380	500	500	280
5949	DCH290	DomaChair 290	360-390	500	500	290
5950	DCH300	DomaChair 300	360-400	500	500	300
5955	DCH350	DomaChair 350	410-440	500	500	350
5959	DCH400	DomaChair 400	460-500	500	500	400
5969	DCH500	DomaChair 500	560-600	500	500	500

Other dimensions upon request

Other dimensions upon request

Other dimensions upon request



Steel spacers for walls and floors

Mesh spacer for non-bearing walls - WallNet

Usage: Maintaining the distance between two parts of a mold and an exact position of two layers of wall reinforcements.

Description: Mesh spacer, made of a steel rod with plastic clips on the ends. Used as a spacer between two parts of the mold, as well as a precise spacer between the reinforcement meshes in non-load-bearing walls, such as industrialized/prefab walls, fences, private houses, pools, mansions and prefabricated construction. Mounting the clips on top of the meshes, 4 units per sqm is recommended.

Assembly method:

Advantages: Maintaining an accurate distance between meshes and maintaining a suitable Concrete cover. There is no need for other spacers (such as a star or kipod) between the mesh and the mold. Maintains an accurate wall thickness and saves costs in a simple installation thus saving time - no need for rebar ties and additional accessories for installation.

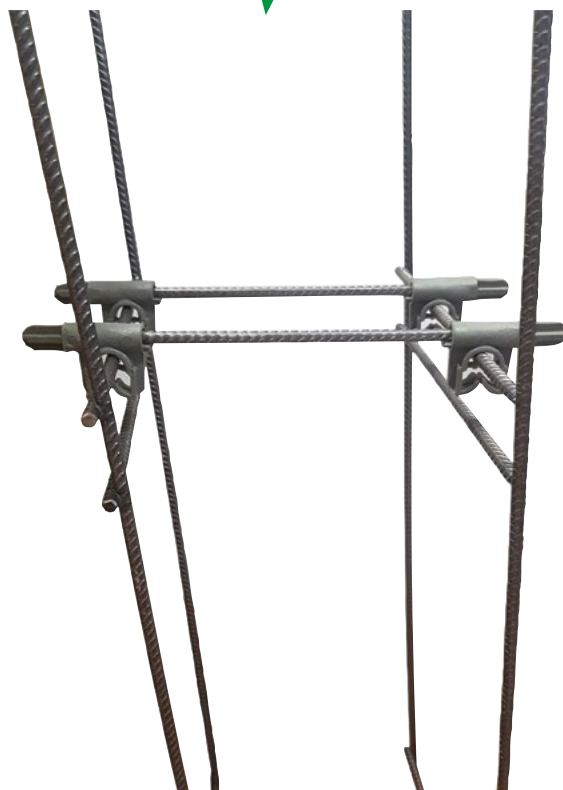
Note: Additional dimensions upon request.
For bearing walls - the product is not an alternative to rebar figures for fixing the mesh (clips) the product can be used as a spacer only.



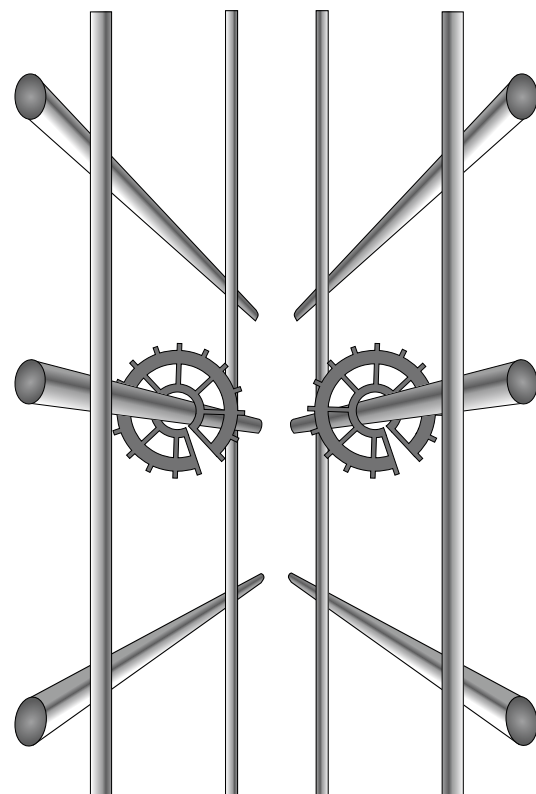
WallNet

Item no	DOMA Item	Desc.	Suitable for width Walls (mm)	Concrete cover (mm)	Suitable for bars (mm)	Qty / sack (Units)	Qty / pallet (Units)
6901	WN20025	WallNet 200-25 (4-12)	200	25	4-12	100	5,000
6902	WN20030	WallNet 200-30 (4-12)	200	30	4-12	100	5,000
6903	WN25025	WallNet 250-25 (4-12)	250	25	4-12	100	5,000
6904	WN25030	WallNet 250-30 (4-12)	250	30	4-12	100	5,000
6905	WN30025	WallNet 300-25 (4-12)	300	25	4-12	100	5,000
6906	WN30030	WallNet 300-30 (4-12)	300	30	4-12	100	5,000

WallNet



Current state



Pipes, plugs, end rings and cones from plastic

Protection pipe DSL - DomaSleeve

- Usage:** Protective pipe that enables to reuse of the quick-Tie rods.
- Description:** Pipe with a rugged finish that adheres well to concrete, or a piece to be pulled out of the concrete.
- Assembly method:** The pipe must be cut to measure the thickness of the wall and mounted on top of a quick tie rod before closing the mold.
- Advantages:** The rugged tube has a rigidity that serves as a spacer the molds.

Item no	DOMA Item	External finish	Unit length (m length)	Bundle packing (m length)	Pallet packing (m length)
7002	DSL 100	1" smooth (Meriron)	2	50	2,500
7003	DSL 125	1.25" smooth (Meriron)	2	50	2,500
7000	DSL 22/26	Rugged	2	100	3,500
7001	DSL 26/30	Rugged	2	50	2,800



DSL 22\26,
DSL 26\30
Rugged



DSL 100, DSL 125
(Meriron)

End cone for protection pipe SK - DomaCone

- Usage:** Ends cones for detachable protective pipes to enable concrete sealing.
- Description:** End cone mounted on the end of the protection pipe.
- Assembly method:** The cone must be inserted at the end of the protection pipe. After casting, pull out the cones and plug the gap with concrete or with a suitable concrete plug. The depth of a standard cone is 10 mm. 30 and 50 mm deep cones plugs are also available.
- Advantages:** Creates a conical recess on the face of the wall to enable a high-quality concrete sealing, such as self-levelling concrete or using a suitable concrete plug with glue.

Item no	DOMA Item	Concrete cover (mm)	Bar dia. (mm)	Sack packing (Units)
9000	DC SK 22\10	22\26	10	Upon Req.
9001	DC SK 22\30	22\26	30	Upon Req.
9002	DC SK 22\50	22\26	50	125
9003L	DC SK 26\10	26\30	10	500
9004	DC SK 26\50	26\30	50	125
9005	Cone for 1" pipe	1"	10	1,000



1" cone / DC SK
22\10 DC SK 26\10



DC SK 22\30



DC SK 22\50 DC
SK 26\50

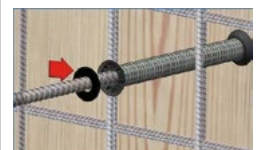
Sealing ring for end cone DomaSealingRing

- Usage:** Prevention of concrete leaks during casting at the point of contact between the end cone and the casting mold.
- Description:** EPDM rubber ring, with an inner hole, diameter 22 mm, thickness 2 mm. The ring is specially designed to act as a buffer between the end cone and the casting mold to prevent concrete leakage and soiling of the concrete surface at the end of the casting.
- Assembly method:** Remove the sticker on the back of the ring and glue the ring on the surface of the plastic cone.
- Advantages:** Prevents leakage of concrete sludge at the point of contact between the plastic cone and the casting mold. Does not require special assembly skill. Quick and easy execution, low costs compared to the other alternatives. The concrete finish is clean, without concrete marks

Item no	DOMA Item	Suitable for cone Plastic	Qty in bag (Units)	Qty in box (Units)
90010	DSR1\22\26	1" 22\10 26\10	100	1,000
90011	DSR22\5-26\5	22\5 26\5	100	1,000



DSR



Plugs, end rings and plastic cones

Rubber plug seal DA - DomaAqua

- Usage:** Preventing the passage of water through a protection pipe.
- Description:** Serrated soft plug, made of antibacterial rubber.
- Assembly method:** The plug must be inserted using a suitable insertion tool DA Tool. The device has an insertion handle with a rounded edge. The plug must be inserted to the required depth.
- Advantages:** Made of flexible, anti-bacterial rubber. Saves filling material, labor and time in concrete sealing. Suitable especially for use in prefabricated walls ("Barnowitz" method)
- Note:** Additional dimensions upon request.

Item no	DOMA Item	Suitable for pipe (mm)	In a package (Units)
9300	DA 20	(3¼") 20\22	1,000
9301	DA 22	(1") 22\26	1,000
9302	DA 26	(1.25") 26\30	500
9303	DA Tool	(1") 22\26	1



DA



DA Tool

Seal for protective pipe STOPFLEX

- Usage:** Seal for protective pipes in concrete walls.
- Description:** Seal designed to seal water using 4 flexible seal rings.
- Assembly method:** Insert adhesive into the protective pipe, and then insert the seal into the pipe in the wall.
- Advantages:** The structure of the seal combined with the sealing adhesive creates a complete seal and strong adhesion between the seal and the pipe. Easy to work with, quick and simple assembly, saving time and labor cost. Efficient and fast application for external sealing in stone walls (Barnowitz method).
* Suitable for 22/26 mm rugged pipe and 1" Meriron pipe

Item no	DOMA Item	In a package (Units)
9311	stopflex	500



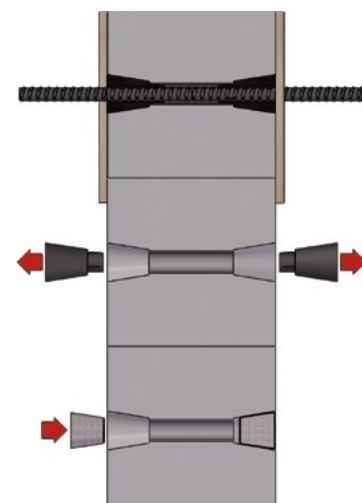
STOPFLEX

Work Instructions

- Cast the wall \ column according to the planner's instructions.
- Remove the end cone after disassembling the industrial molds.
- Glue the concrete plug with concrete adhesive, into the gap created by the cone.
- Ensure the cone is sunk about 3-10 mm from the concrete surface to allow plaster to be applied.

Accessories required

- Protection pipe 22\26 DSL or 26\30 DSL
- DC-SK 26\50 or DC-SK 22\50 end cone
- Conical plug 26\50 DCC2
- Concrete adhesive A Part DCG and hardener B Part DCG



Miscellaneous

Protection cap for rebars DSC - DomaSafeCap

Usage: Protect workers from injuries resulting from protruding rebars on the site.
Description: Luminous plastic cover cap.
Assembly method: The protective cap must fully cover the exposed end of the rebars.
Advantages: The dome is bright colored to stand out on the site.
 The cap structure ensures a stable fixation on rods of different diameters.

Item no	DOMA Item	Bar dia. (mm)	Color	Shape	In a package (Units)
100000	DSC I 10-18	10-18	Orange	Bottle	1000
100001	DSC I 18-32	18-32	Orange	Bottle	500
100002	DSC I 32-50	32-50	Orange	Bottle	150
100003	DSC II 8-16	8-16	Red	Cap	Upon Req.
100004	DSC II 18-32	18-32	Red	Cap	Upon Req.



DSC I

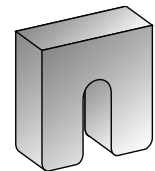


DSC II

Mesh spacer (wet cladding) DU-10

Usage: Distancing the mesh away from the back wall
Description: U-shaped disc 10 mm thick
Assembly method: Distance the mesh away from the wall using the spacer. Through the elongated slot fix a dowel and fasten it against a steel washer, to fix the mesh to the back wall. Especially suitable for wet stone cladding.

Item no	DOMA Item	Package (Units)
102000	DU-10	500



DU-10

Triangles and profiles for forms

Triangle DomaChamp - L

- Usage:** Creating a truncated corner in cast concrete elements of wood molds.
Description: Isosceles triangle made of PVC
Assembly method: The triangle must be fixed to the mold through pre-prepared holes.
Advantages: Easy and quick to assemble

Item no	DOMA Item	Size (mm)	Unit Length (m)	Qty in bag (Units)	Qty in box (Units)
8000	DC-L 15	15\15\21	2.5	100	Upon Req.
8001	DC-L 20	20\20\28	2.5	100	2,500
8001HQ	DC-L 20HQ	20\20\28	2.5	100	Upon Req.



DC-L

Triangle with connecting strap DomaChamp - N/E

- Usage:** Creating a truncated or rounded corner in cast concrete elements.
Description: Isosceles triangle with connecting strap made of PVC
Assembly method: The triangle must be fixed to the mold through pre-prepared holes in **the strap**.
Advantages: Rigid, easy and quick to assemble
 The cutting line is straight without signs of the connection rivet

Item no	DOMA Item	Size (mm)	Unit Length (m)	Qty in bag (Units)	Qty in box (Units)
8100	DC-N 15	15\15\21\31	2.5	100	Upon Req.
8101	DC-N 20	20\20\28\36	2.5	150	2,100



DC-N

Steel triangle S - DomaChamp

- Usage:** Creating a truncated corner in cast concrete elements of steel molds.
Description: Isosceles triangle made of steel.
Assembly method: The triangle must be **welded** to the steel mold.
Advantages: Straight and smooth cut line.
Note: Multiple use of industrial molds

Item no	DOMA Item	Size (mm)	Unit length (m length)	Qty / package (m length)	Pallet packing (m length)
8500	DC-S 7	7\7	4	100	1,000
8501	DC-S 10	10\10	4	100	1,000
8502	DC-S 15	15\15	4	100	1,00
8503	DC-S 20	20\20	4	32	960



DC-S

Plugs

Stopper for DYWIDAG pipe

- Usage:** Sealing against water and gases at a high extraction rate for DYWIDAG pipes in concrete walls.
- Description:** ABS plastic and TPE rubber plug - High quality and durable long-lasting materials. Produced in concrete color for a clean and aesthetic appearance.
- Assembly method:** After removing the cone (item 9005), apply MS polymer around the stopper, and insert it in a rotation into the 1" Meriron tube.
- Advantages:** Sealing against water and gases at high pressure, saving time and labor costs, ease of work, quick and simple assembly.
- Note:** Suitable for Meriron protection pipes 1" and 22/26



Stopper 22/26

Item no	DOMA Item	In a package (Units)
9310	Stopper 22/26	400



youtu.be/GevQmYRBqXM

Gas counter pressure test



The stopper was successfully tested by the Israeli Standards Institute and was found to be in line with the instructions of the Home Front Command as defined in the specification for sealing pipeline passages in Residential Protected Rooms. Complies with internal and external helium gas pressure sealing guidelines.

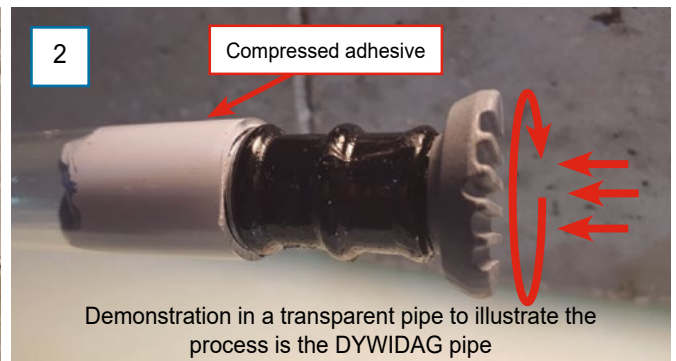
Water tightness test



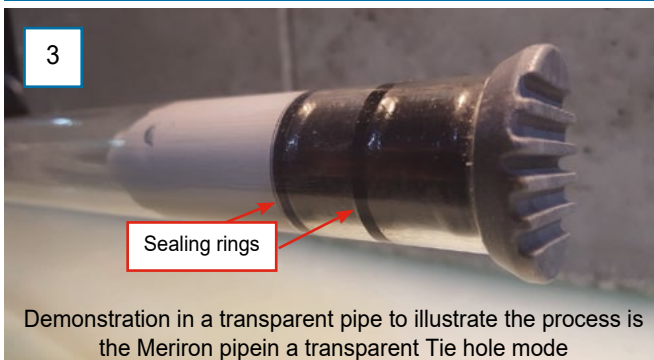
The stopper was successfully tested according to the Israeli standard 1476 part 2. During the test, the stopper stood at a constant pressure of 5 atmospheres in water in a pressure chamber.



Injection of MS polymer glue into the Meriron pipe



Demonstration in a transparent pipe to illustrate the process is the DYWIDAG pipe



Demonstration in a transparent pipe to illustrate the process is the Meriron pipe in a transparent Tie hole mode

Knocking the stopper into the Meriron pipe



Stopper inside the concrete cone

Plastic and concrete spacers

Integrated protection pipe with adjustable spacer

- Usage:** High-quality integrated protection pipe for threaded "DYWIDAG" rods, maintaining the distance between opposing molds.
- Description:** Pipe with 2 seal rings and 4 sockets designed for sealing and holding the "kochle" grout used in the Barnowitz method. The pipe has built-in annular water stops to prevent water infiltration through the outer casing of the pipe, the integrated protection pipe is provided to the exact size of the wall.
- Assembly method:** The integrated protection tube must be placed by passing a threaded rod through the meriron pipe. After casting, remove the end cone from both sides of the pipe using a rod or screwdriver.
- Advantages:** A precise and high-quality plastic accessory, convenient for work, transport and storage, significant savings in time and manpower required to close the molds for concrete casting, the device holds the pipe perpendicular to the mold and makes it easier to assemble the mold.
- Note:** Stands up to heavy workloads. A clip can be added to keep 25 mm from the mold.

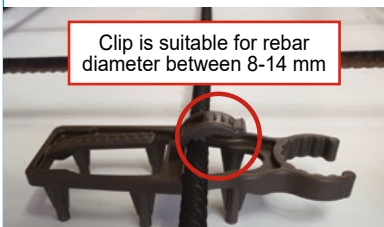
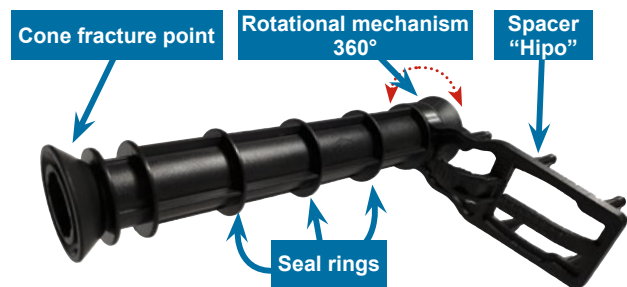


Integrated protection pipe DCS III DomaCombiSleeve

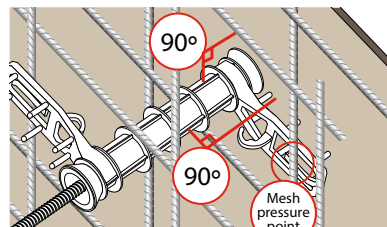
Item no	DOMA Item	Wall dim. (mm)	Sack packing (Units)	Pallet packing (Units)
7300	DCS III 22/150	150	100	500
7301	DCS III 22/180	180	100	500
7302	DCS III 22/200	200	100	500
7309	DCS III 22/220	220	100	500
7303	DCS III 22/250	250	100	500
7304	DCS III 22/300	300	100	500
7305	DCS III 22/350	350	50	300
7306	DCS III 22/400	400	50	300
7308	DCS III 22/500	500	50	300

"Hipo" spacer

Item no	Item Description
7350	End detail of integrated pipe



"Hipo" - multi-purpose spacer



Assembly drawing of the pipe inside the molds with 2 iron meshes



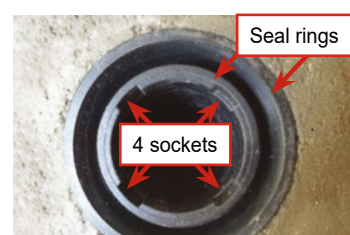
The spacer is pressed under the iron and maintains the distance between the iron and the mold



Detached cone + concrete cone



Pipe cut inside a concrete casting



2 seal rings at the end of the cone + 4 sockets for grout retention using the Barnowitz method

Plastic spacers for walls

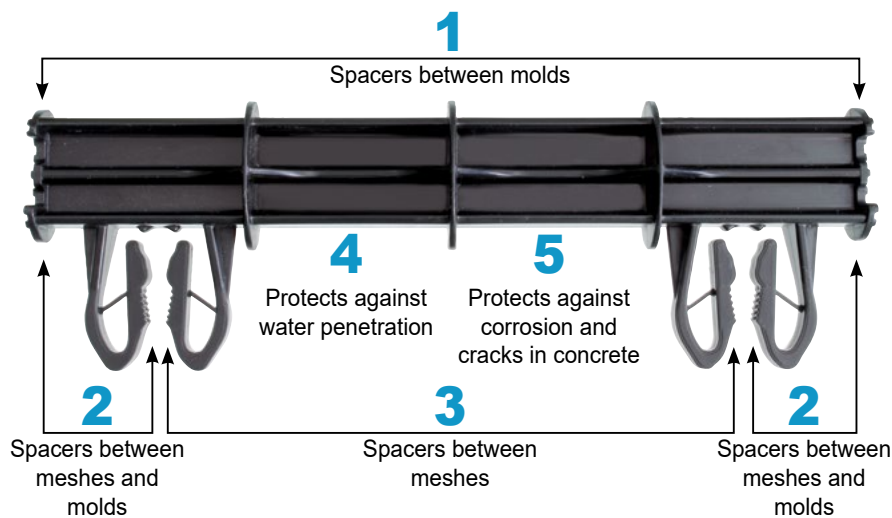
Mesh spacer for non-bearing walls - Keeper

- Usage:** Maintaining the distance between two parts of a mold and an exact position of two layers of wall reinforcements.
- Description:** Spacer suitable for casting walls, columns, for diameters 6 to 12 mm. Universal plastic accessory made of ABS assembled by pressing a spacer between the mold, between mesh and mold, between meshes. It also protects against water penetration, corrosion and cracks in the concrete.
- Assembly method:** Mounting the plastic on top of the meshes, 3-4 units per sqm is recommended.
- Advantages:** Significant savings in time and manpower required for the work of the iron ties. Maintaining correct intervals between the meshes and molds. Resistance to large compressive loads. Maximum precision in placing the meshes and molds. Minimal contact points with mold. Three built-in integrated ring-shaped water stops to prevent water penetration, corrosion and cracking. Low self-weight, convenient for work, transport and storage.
- Note:** **For bearing walls - the product is not an alternative to iron lags for fixing the mesh (clips) the product can be used as a spacer only.**
* Additional dimensions upon request.



Keeper

Item no	DOMA Item	Desc.	Suitable for wall width	Concrete cover (mm)	Suitable for iron
69030	KD 20025	(6-12) 200-25	200	25	6-16
69031	KD 25025	(6-12) 250-25	250	25	6-16
69032	KD 30025	(6-12) 300-25	300	25	6-16



Columns

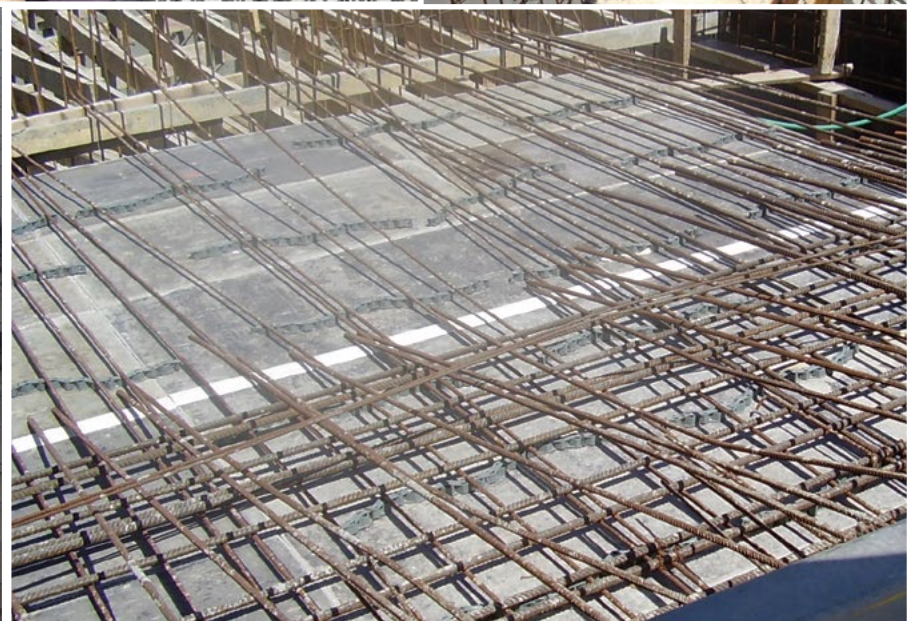


Concrete walls

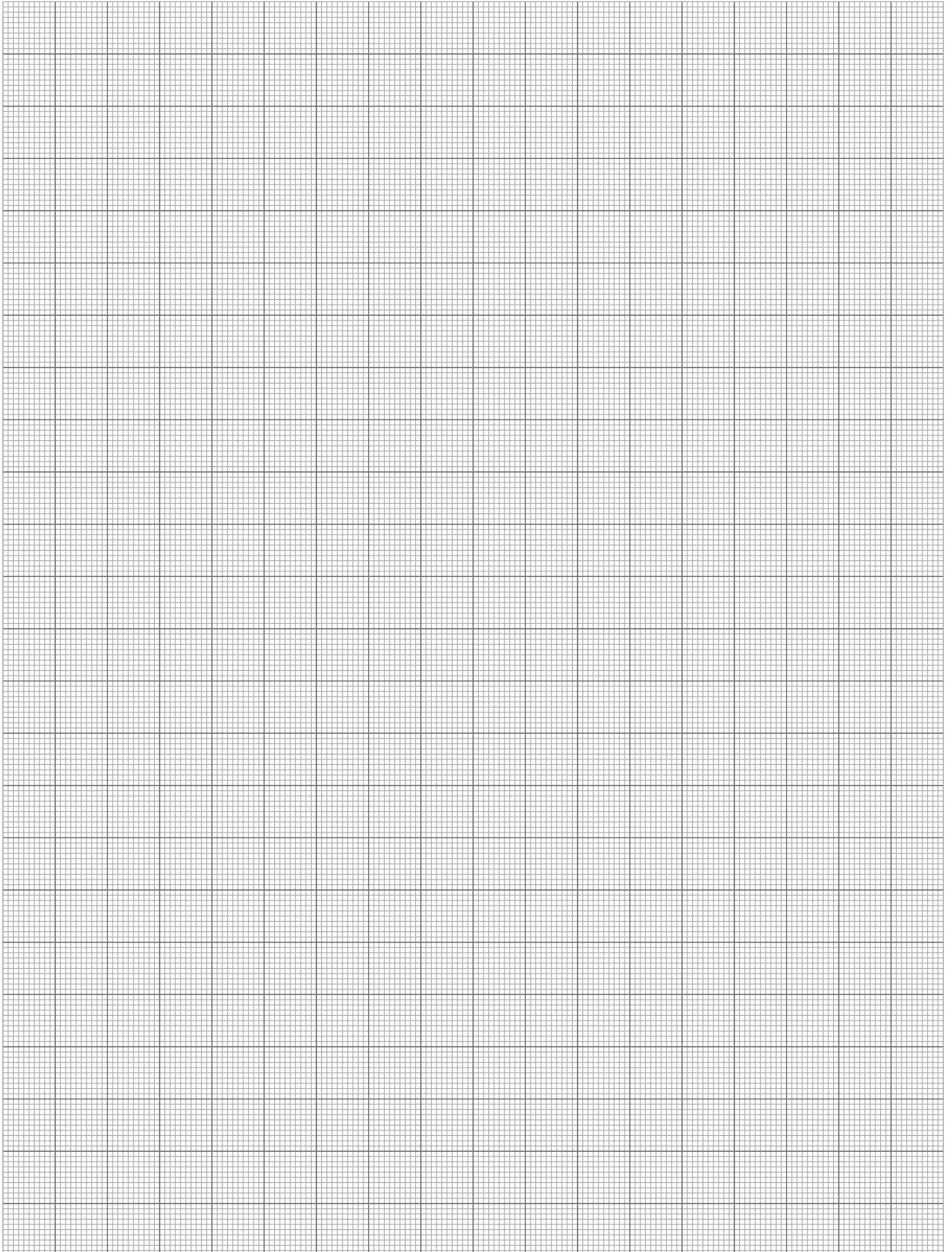


Concrete beams

Plastic and concrete spacers



Notes



General commercial conditions

General commercial conditions

Doma Construction and trade marketing (1996) Ltd., VAT NO. 512416215 (hereafter: "The Supplier")

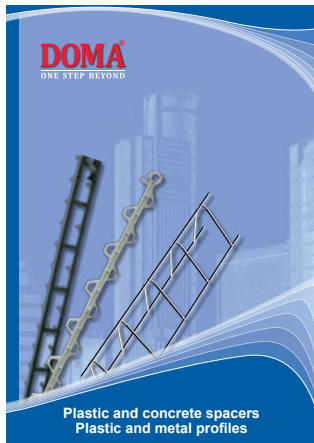
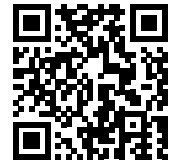
1. The customer undertakes to purchase the product from "DOMA," hereafter "the supplier," as stated in the terms of the order
2. The customer undertakes to pay the supplier the full price for the product plus legal VAT (hereafter: "the payment")
3. The customer will pay the supplier the consideration for the delivery of the product according to the terms of payment stated in the order
4. It is agreed and understood that the supplier is entitled not to deliver the product to the customer if the customer does not meet his payment obligations, in full and on time, and that this will not constitute a breach of the supplier's obligations towards the customer.
5. It is agreed and understood, that the ownership of the product will be transferred to the customer only after the full payment has been made.
6. For any delay in making the payment, the ordering party shall pay to the supplier, interest on arrears at the rate of the maximum excess interest rate common in the market.
7. The supplier reserves the right to change the visual design of the product at any given time, without prior notice.
8. The supplier will not be liable for any damage caused to the customer due to a delay in the delivery of the product, insofar as this delay is not under the supplier's responsibility and/or control, including due to: force majeure, an act of terrorism, strike, fire, flood, storm, war, theft, delay in shipping by sea or air, etc. In the event of one of the above mentioned, the supplier will be entitled, respectively, to extend the delivery dates of the product. A delay in the delivery of the product not exceeding 7 days will not be considered a breach of this agreement
9. The customer undertakes to strictly follow the usage and safety instructions accompanying the product, and to use the product carefully, according to its characteristics and nature. In addition, the customer undertakes to act, at all times, in accordance with the laws and the mandatory and/or accepted rules of caution.
10. The customer undertakes to carry out safety tests on his behalf before the initial use of the product.
11. The customer undertakes that the use of the product will only be done by qualified, experienced, and skilled personnel, according to the type of product and its nature.
12. The customer undertakes that the use of the product, as described above, will be done under continuous professional supervision.
13. The customer declares that he is aware that the manner of using the product, as described above, is of utmost importance, and that poor and/or negligent and/or different use of the product may, God forbid, cause accidents and serious injuries and even death.
14. The customer is aware and agrees that the supplier will not be responsible in any way for the consequences that may be caused by the violation of one and/or more of the precautionary guidelines listed above and below by the customer and/or anyone on his behalf.
15. The customer declares that he is aware that there are many factors that may affect the nature and quality of the product, including: abrasion, fusion (corrosion,) deformation, excessive load and storage other than according to manufacturer's instructions. Therefore, and in order to maintain the required rules of caution, the customer undertakes to carry out tests before starting the use of the product and to constantly monitor the quality of the product, as well as to examine whether it is possible to continue using it, thus paying attention to the influence of the factors on the nature and quality of the product over time. For the avoidance of doubt, it will be clarified that the responsibility for conducting the aforementioned tests, including determining the frequency of the tests, rests solely with the customer.
16. The customer declares that he is aware that any repair and/or alternation of the product after it has been delivered to him and/or to someone on his behalf, may impair the nature of the product and affect its quality, and that in any such case no warranty will be provided for the quality of the product. For the avoidance of doubt, it is agreed that the supplier will not be responsible in any way for a product that has been modified and/or repaired in any way.
17. Without detracting from the generality of the aforementioned, the customer declares that he is aware that the supplier will not be responsible for the nature and/or quality of the product in the event of one and/or more of the following cases:
 - A. Damage caused intentionally by the customer and/or someone on behalf of the customer.
 - B. Damage caused due to careless and/or negligent use by the customer and/or someone on his behalf.
 - C. Damage caused due to improper use and/or deviation from the supplier's instructions by personnel that does not have the expertise and experience required to handle the product.
 - D. Damage caused by a third party and/or due to an external force beyond the supplier's control.
 - E. Damage caused after a repair and/or alternation to the product made by the customer.
 - F. Damage caused by replacing any component in the product

Product return policy

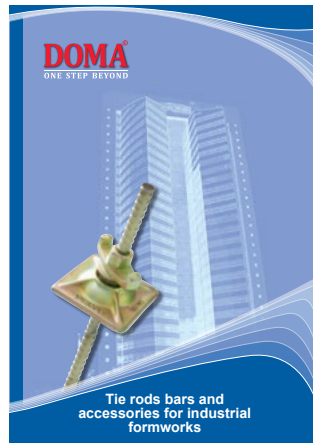
- Products supplied to the customer can be returned up to 7 calendar days from the date of goods receipt (unless different delivery and return conditions have been approved in the order), and provided that they are returned in their original packaging and the products have not been used. Stainless steel pins or any other (manufactured) product or BMS, / UPSET / DBAR bars CBOX, for manufactured products such as: Rebind Connections, that were specially ordered from DOMA by the customer, according to special specifications of a DOMA supplier in Israel or overseas.
After confirmation of the order details / execution of a financial order by the customer, the customer will not be able to change, replace, cancel or return the product.
 - Cancellations and returns of private customers - subject to the Consumer Protection Regulations, 2010
 - Cancellation fees: In the event that the customer returns the products ordered by him, DOMA will be entitled to collect credit card processing fees (if the transaction was made by credit card) in addition, DOMA will collect a cancellation fee of up to 5% of the returned/cancelled products.
18. All copyrights relating to the product (including: trademarks, samples, copyrights, etc.) are reserved to the supplier. The customer undertakes not to make use of the supplier's intellectual property in the product, including transferring of documents and diagrams related to the product, either directly or indirectly, to a third party.
 19. Exclusive jurisdiction in relation to any question and/or claim and/or dispute and/or litigation, which is the subject of this transaction, is granted to the authorized courts in Tel-Aviv, Israel.

Additional catalogs

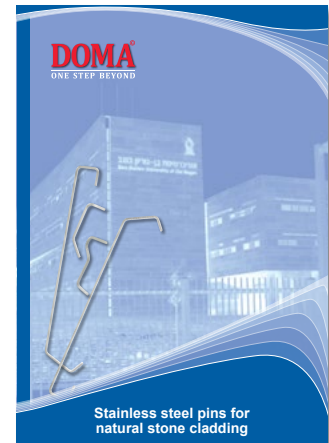
For updated information on current products and catalogs
Scan the code and enter the catalog page on the website
www.doma.co.il/eng-catalogs



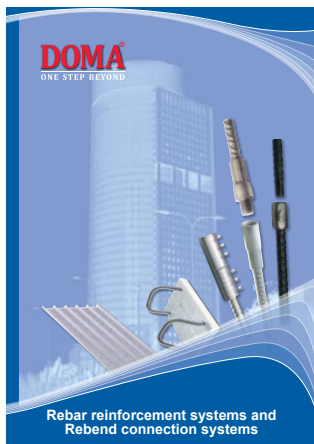
Plastic and concrete spacers
Plastic and metal profiles



Tie rods bars and
accessories for industrial
formworks



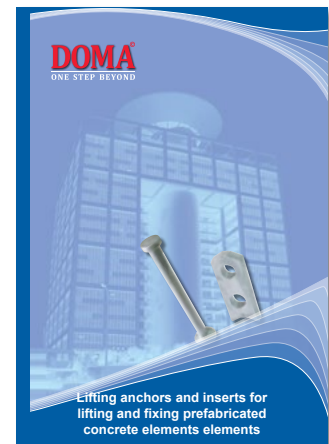
Stainless steel pins for
natural stone cladding



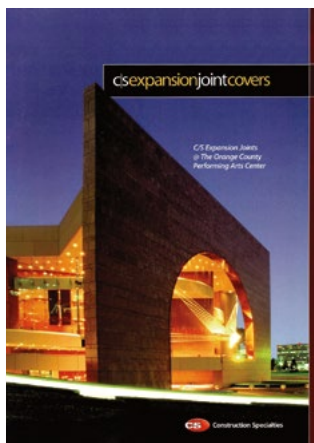
Rebar reinforcement systems and
Rebind connection systems



Anchoring channels and
connections using T-head Bolts



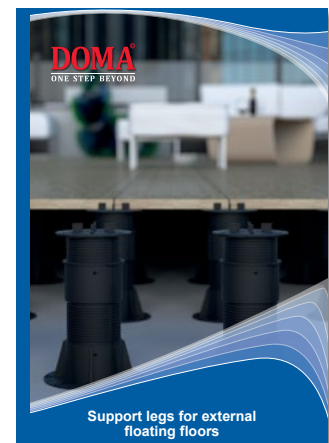
Lifting anchors and inserts for
lifting and fixing prefabricated
concrete elements



Expansion and earthquake
joints C/S Group



Support Pedestal for external
floating floor Buzon



Support Pedestal for external
floating floors

Sale of the products in accordance with the general commercial conditions of the DOMA company,
refer to the company's website www.doma.co.il

DOMA[®] | ONE STEP BEYOND

Tel: 972-3-9026067, Fax: 972-3-9026066

www.doma.co.il

doma@doma.co.il

